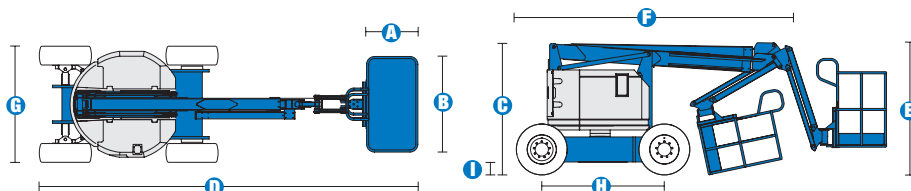


# Specifications



MODELS	Z™-34/22 DC		Z™-34/22 Bi-Energy	
MEASUREMENTS	Metric	US	Metric	US
Working height maximum*	12.52 m	40 ft 6 in	12.52 m	40 ft 6 in
Platform height maximum	10.52 m	34 ft 6 in	10.52 m	34 ft 6 in
Horizontal reach maximum	6.78 m	22 ft 3 in	6.78 m	22 ft 3 in
Up and over clearance maximum	4.57 m	15 ft	4.57 m	15 ft
A Platform length	76 cm	2 ft 6 in	76 cm	2 ft 6 in
B Platform width	1.42 m	4 ft 8 in	1.42 m	4 ft 8 in
C Height - stowed	2 m	6 ft 7 in	2 m	6 ft 7 in
D Length - stowed	5.64 m	18 ft 6 in	5.64 m	18 ft 6 in
E Storage height	2.26 m	7 ft 5 in	2.26 m	7 ft 5 in
F Storage length	4.08 m	13 ft 5 in	4.08 m	13 ft 5 in
G Width	1.73 m	5 ft 8 in	1.73 m	5 ft 8 in
H Wheelbase	1.88 m	6 ft 2 in	1.88 m	6 ft 2 in
I Ground clearance - centre	15 cm	6 in	15 cm	6 in

PRODUCTIVITY				
Lift capacity	227 kg	500 lbs	227 kg	500 lbs
Platform rotation	180°	180°	180°	180°
Vertical jib rotation	139° (+72°/-67°)		139° (+72°/-67°)	
Turntable rotation	355° non-continuous		355° non-continuous	
Turntable tailswing	zero	zero	zero	zero
Drive speed - stowed	6.4 km/h	4.0 mph	6.4 km/h	4.0 mph
Drive speed - raised**	30 cm/s	1 ft/s	30 cm/s	1 ft/s
Gradeability - stowed***	30%	30%	30%	30%
Turning radius - inside	1.75 m	5 ft 9 in	1.75 m	5 ft 9 in
Turning radius - outside	4 m	13 ft 1 in	4 m	13 ft 1 in
Controls	24 V DC proportional		24 V DC proportional	
Tyres	23 x 37 cm	9 x 14.5 in	23 x 37 cm	9 x 14.5 in

POWER				
Power Source	48 V DC (eight 6 V batteries 315 Ah capacity) 48 V DC (eight 6 V batteries 315 Ah capacity) with Kubota 13.3 Hp (9.9 kw) diesel driven alternator			
Auxiliary Power Unit	24 V DC	24 V DC	24 V DC	24 V DC
Hydraulic Tank Capacity	15.1 L	4 gal	15.1 L	4 gal
Fuel tank capacity	—	—	45.4 L	12 gal

SOUND & VIBRATION LEVELS				
Sound pressure level (ground workstation)	<70 dBA	<70 dBA	78 dBA	78 dBA
Sound pressure level (platform workstation)	<70 dBA	<70 dBA	76 dBA	76 dBA
Vibration	<2.5 m/s <sup>2</sup>	<8 ft 2 in/s <sup>2</sup>	<2.5 m/s <sup>2</sup>	<8 ft 2 in/s <sup>2</sup>

WEIGHT****				
	5,179 kg	11,189 lbs	5,632 kg	12,189 lbs

## STANDARDS COMPLIANCE

EU Machinery Directive 2006/42/EC

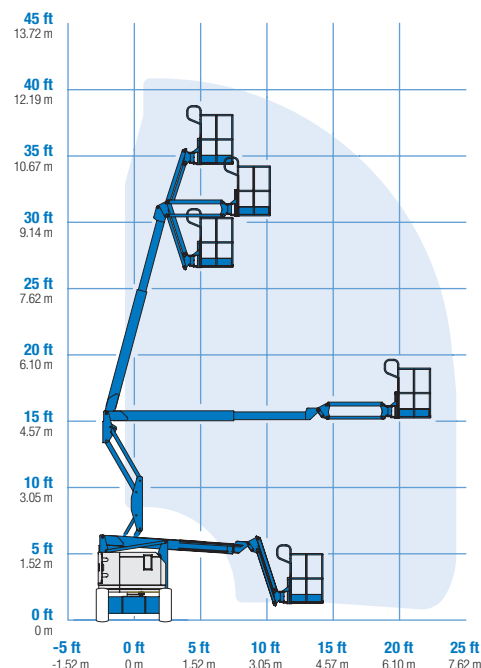
EU Standard EN280:2001, A2:2009

EMC Directive 2004/108/EC EN 61000-6-2, EN 61000-6-4

EU Low Voltage Directive 206/95/EC EN 60204-1:2006 EU

EU Noise Directive 2000/14/EC EN ISO 3744

## RANGE OF MOTION Z™-34/22 DC/Bi



\* The metric equivalent of working height adds 2 m to platform height. U.S. adds 6 ft to platform height.

\*\* In lift mode \*(platform raised), the machine is designed to operate on firm, level surfaces only.

\*\*\* Gradeability applies to driving on slopes. See operator's manual for details regarding slope ratings.

\*\*\*\* Weight will vary depending on options and/or country standards.

## Features

### EASILY CONFIGURED TO MEET YOUR NEEDS

#### PLATFORM OPTIONS

- Steel 1.42 m (4 ft 8 in) (standard)
- Steel 1.17 m (3 ft 10 in)

#### JIB

- 1.22 m (4 ft) jib boom

#### POWER

- 48 V DC power source

#### BATTERY CHARGING OPTIONS

- 25 Amp 48 V on-board charger
- On-board alternator powered by Kubota diesel 13.3 hp (9.9 kW) engine
- Battery charge indicator (BCI)\*\*

#### TYRE OPTIONS

- Industrial foam-filled (standard)
- Industrial non-marking (foam-filled, DC only)

### STANDARD FEATURES

#### MEASUREMENTS

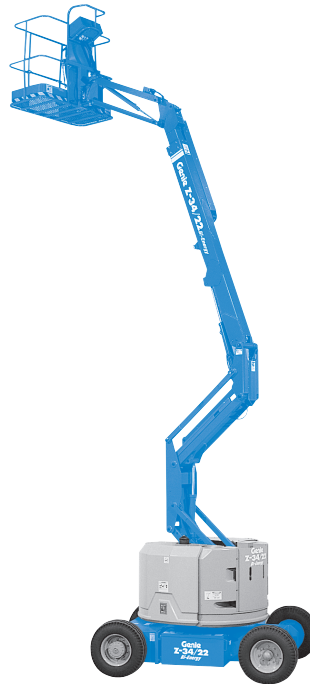
- 12.52 m (40 ft 6 in) working height
- 6.78 m (22 ft 3 in) horizontal reach
- 4.57 m (15 ft) up-and-over clearance
- Up to 227 kg (500 lb) lift capacity

#### PRODUCTIVITY

- 1.22 m (4 ft) jib boom with 139° working range
- Self-levelling platform
- Hydraulic platform rotation
- Fully proportional controls
- Thumb rocker steer
- Drive enable
- AC power to platform
- Horn
- Hour meter
- Tilt alarm
- Descent alarm
- Alarm package (flashing beacon & travel alarm)
- 355° non-continuous turntable rotation
- Lockable turntable covers (Bi-Energy only)
- Zero tailswing
- Certified load sensor

#### POWER

- 48 V deep cycle battery pack
- 24 V DC auxiliary power
- On board alternator powered by Kubota 13.3 hp (9.9 kW) engine (Bi-Energy only)



### OPTIONS & ACCESSORIES

#### PRODUCTIVITY

- Platform swing gate
- Half-mesh platform inserts with swing gate
- Air line to platform
- Power to platform (incl. plug, socket and ground fault interrupt leakage on request)
- Light package: 2 chassis mounted drive lights, 2 platform mounted work lights
- Hostile environment kit: cylinder bellows, boom wiper seals, platform control box cover
- Low temperature cut-out module
- Fire resistant hydraulic oil
- Biodegradable hydraulic oil
- Tilt cut-out option
- Tool tray
- Fluorescent tube caddy\*
- Platform work lights
- Lockable platform control box cover

#### POWER

- Battery charge indicator (BCI)\*\*
- Low voltage interrupt with BCI

\* Available aftermarket only  
\*\* Standard on Bi-Energy only

#### Enquiries from Europe:

Tel: +31 165 519 361  
Fax: +31 165 511 148  
Email: AWP-InfoEurope@terex.com

#### Offices:

##### France

Tel: +33 (0)2 37 26 09 99  
Fax: +33 (0)2 37 26 09 98

##### Germany

Tel: +49 (0)4221 491 810  
Fax: +49 (0)4221 491 820

##### Spain

Tel: +34 93 572 50 90  
Fax: +34 93 572 50 91

##### Scandinavia

Tel: +46 31 57 51 00  
Fax: +46 31 57 51 04

##### The Netherlands

Tel: +31 165 519 361  
Fax: +31 165 511 148

#### UK

The Maltings  
Wharf Road  
Grantham NG31 6BH  
UK  
Tel: +44 (0)1476 584333  
Fax: +44 (0)1476 584334

#### Middle East

Tel: +971 4 399 0381  
Fax: +971 4 399 0382  
Email: AWP.Infome@terex.com

#### Russia & CIS countries

Tel: +7 495 660 32 30  
Fax: +7 495 660 32 29  
Email: info@terexrus.ru

#### Corporate Headquarters:

##### United States

18340 NE 76th Street  
P.O. Box 97030  
Redmond, WA  
USA 98073-9730  
Tel: +1 425 881-1800  
Fax: +1 425 883-3475

#### Distributed By: